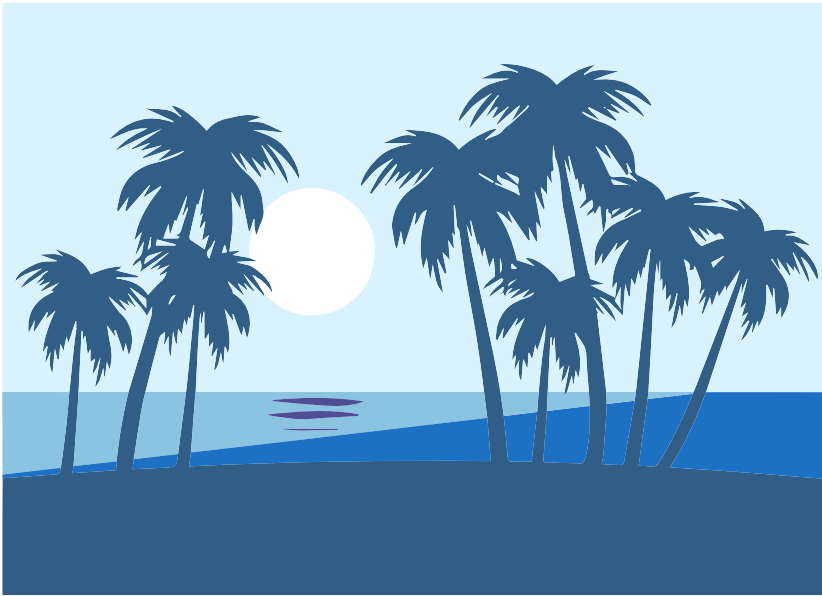


# Triptyche

Color Theory Assignment  
Jae Young Kim



## Analogous

The analogous color schemes in blue used for this example portray a scene of cool yet subtle atmosphere of the beach. Using analogous colors tend to bring down the tone of the visual message.



Inspired by  
Claude Monet -  
Morning On The Seine,  
1897



## Complementary

The analogous color schemes using warm and cool colors are used to effectively separate its contrast in visuals and bring up the impacts as well.



Inspired by  
Johannes Vermeer -  
The Milkmaid, 1657-1658



## Monochromatic

The monochromatic color schemes using only black, grey and white eliminates any color perceptions and help to focus on the each objects and visuals effectively.



Inspired by  
Andy Warhol - Shadow, 1978