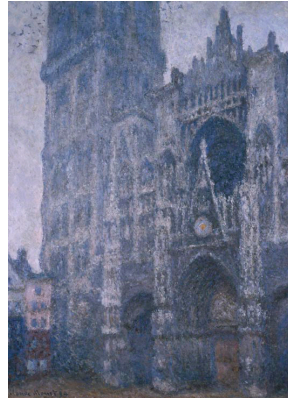
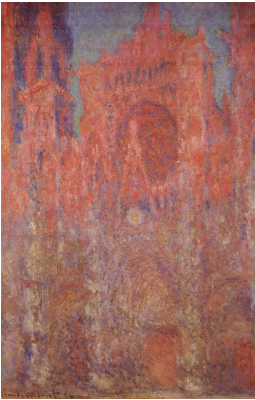


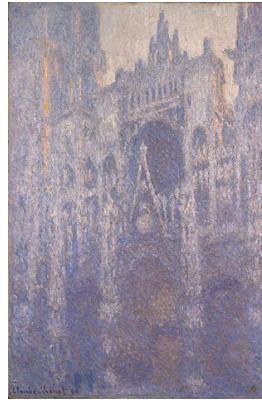
Looks the most natural because of warm colors and high contrast



Very cold and dark. Somewhat of a gothic aesthetic.



Extremely warm and saturated. As a result, has a slightly supernatural feel to it.



Very muted and desaturated. A sepia-like tone that feels like an old photograph.



Very peculiar palette of intense warm colors with high contrasts. Almost feels psychedelic