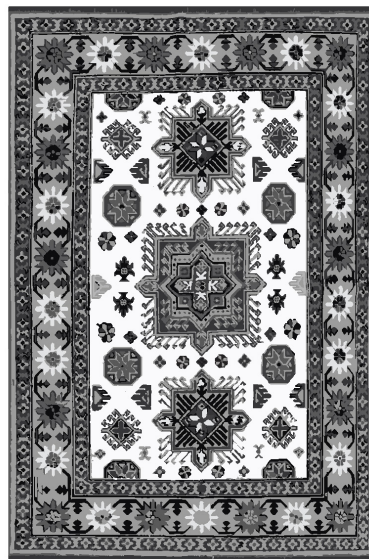




I used a Kazak rug as my subject and I drew color inspiration from artists that I admire.





Inspired Frank Lloyd Wright's architecture.

Specially, Falling Water and his Home and Studio.

*Shades of brown and beige represent the natural materials he loved to use.
Green and blue are added to represent nature, which he took inspiration from.*

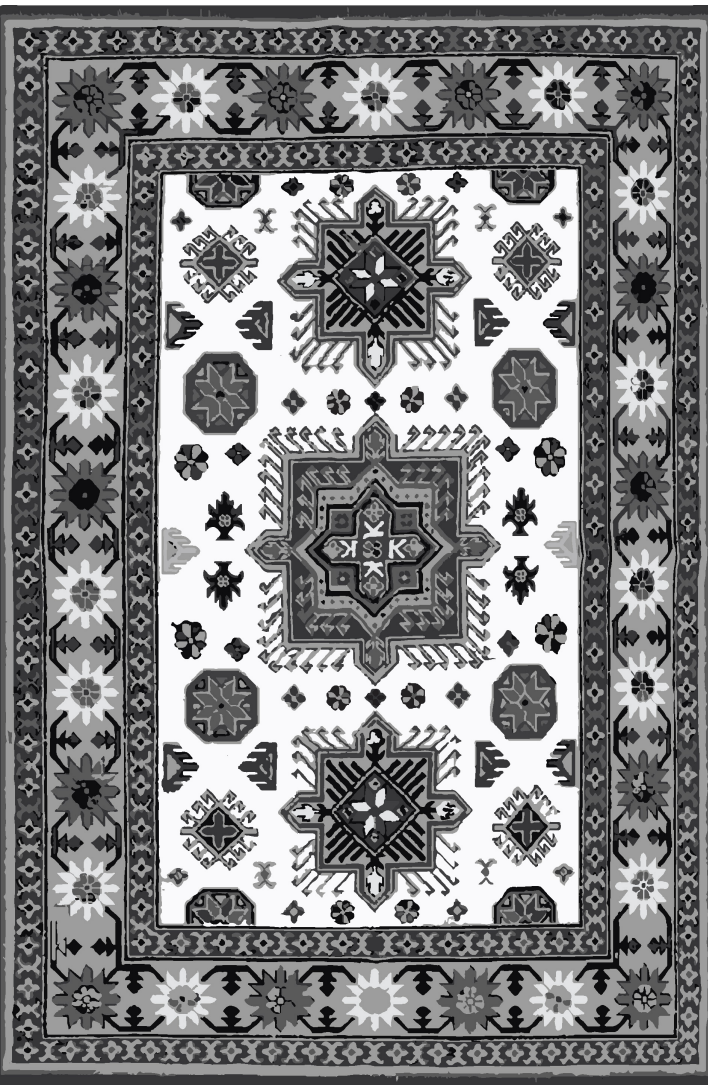
Red is an accent color that is found on the windows of Falling Water.





*Inspired by Rembrandt's paintings with an emphasis on chiaroscuro.
Light and dark neutral hues are accented by deep reds.*

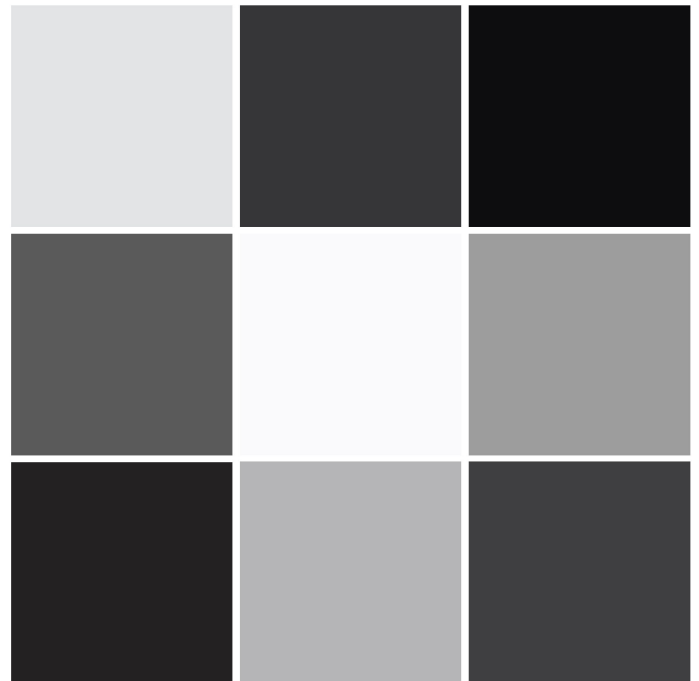




Inspired by the black and white photographs taken by Ansel Adams.

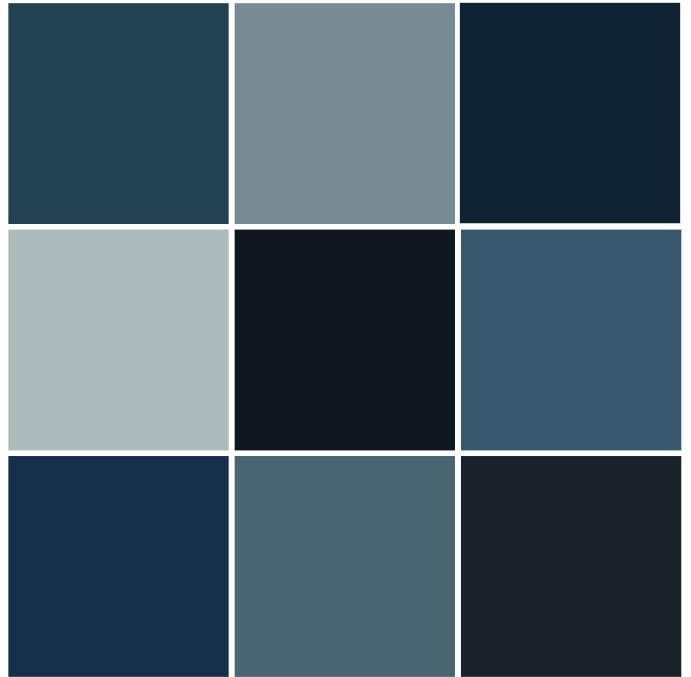
This is an achromatic color palette.

I can see this carpet in a home with an achromatic color scheme combined with metal and stone materials.





*Inspired by Pablo Picasso's Blue Period.
A monochromatic color scheme.*





*An extra carpet for fun using one of my favorite colors, olive green.
A carpet featuring different values of olive green and black.
There is a light-dark contrast which is something that I love.*

