



Summer

Good weather

Light pink and light green colors make me feel warm



Fall

Brown and pale yellow colors make me feel alone.



Feels like it's spring because of a lot of green colors.

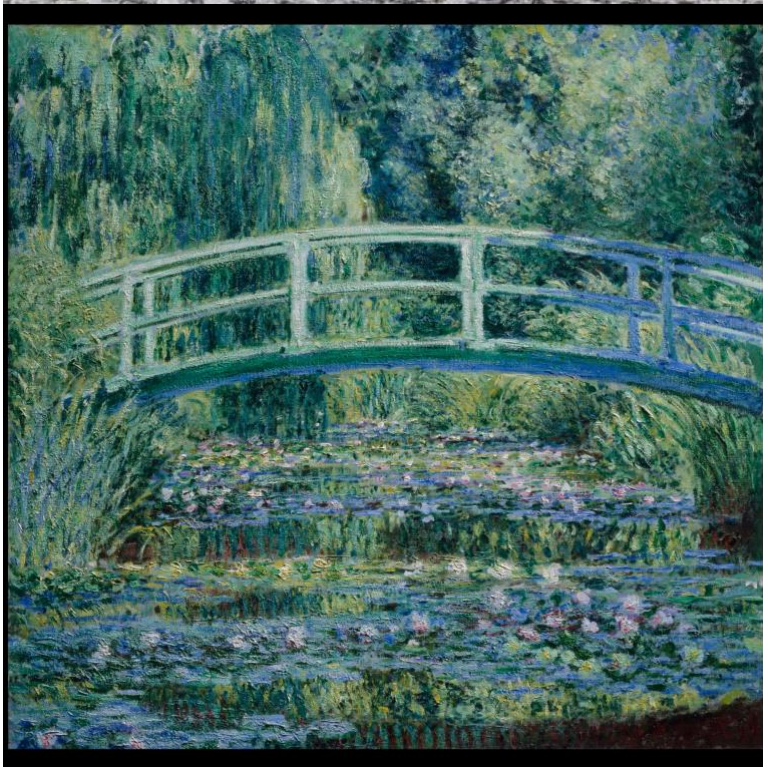
Freshness

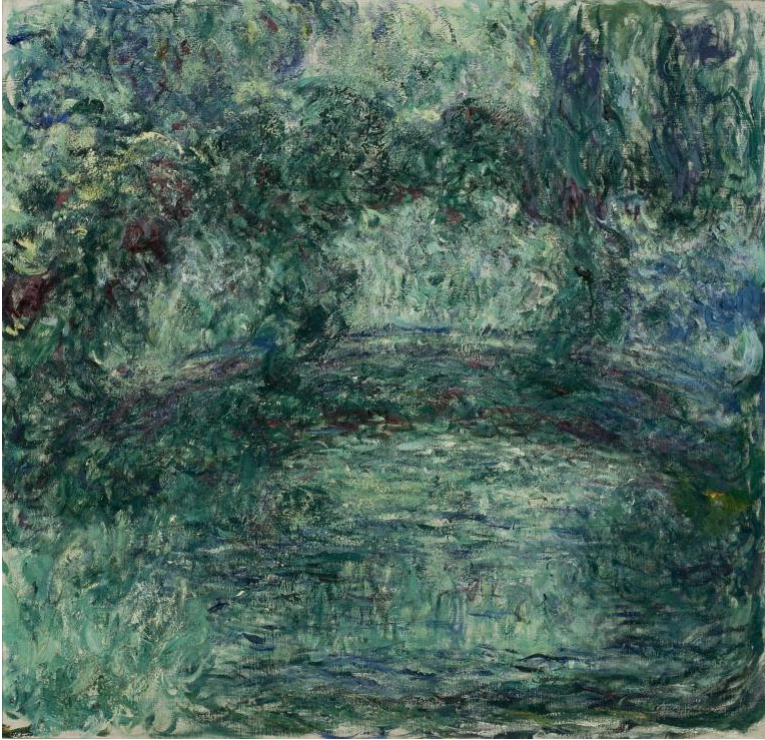


Winter

Feel cold

No vivid colors





Feels like the weather of these two paintings are the same but looks totally different. Because the bottom one was painted about 20-25 years later. Claude Monet became blind when he was in his 60s. So, the bottom one is blurry and rough. I also feel darkness even though the main color is green.