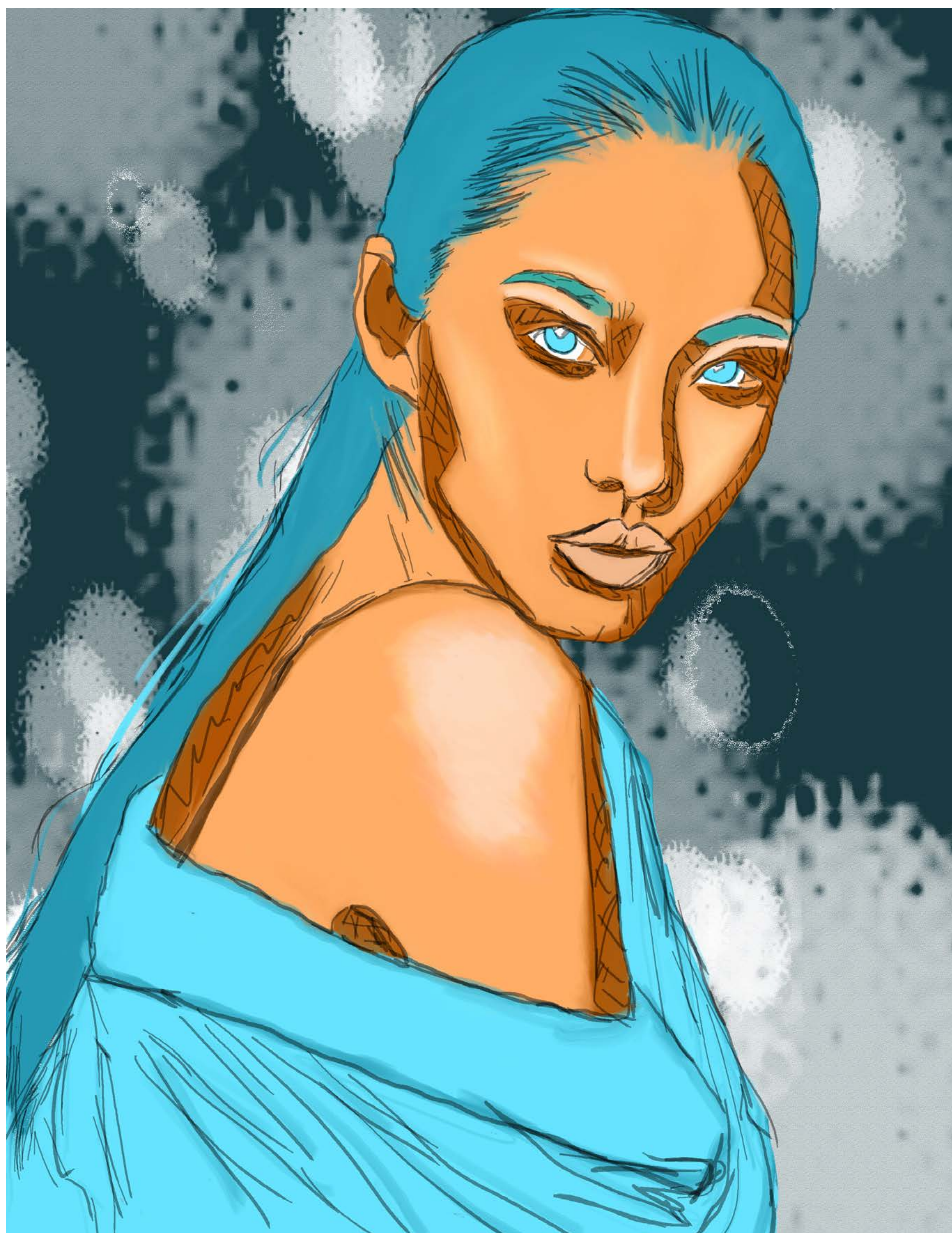


I chose to do portraits for this assignment because I love drawing them and most of the art that I do in my spare time are portraits. Faces can add an extra layer of emotion to an artwork and I thought that it would be interesting to explore that through the lens of color. In creating these color palettes I enlisted the help of Adobe's fabulous color wheel picker, which gave a great variety of options and is so easy to use. I ended up adjusting some of the Adobe colors to suit the overall feel of the portrait.

Analogous

With these colors I wanted to go for a softer look, yet still retain some intensity. The colors sometimes felt very muted, I guess since they're next to each other on the color wheel but the orange gives it a nice focal point.

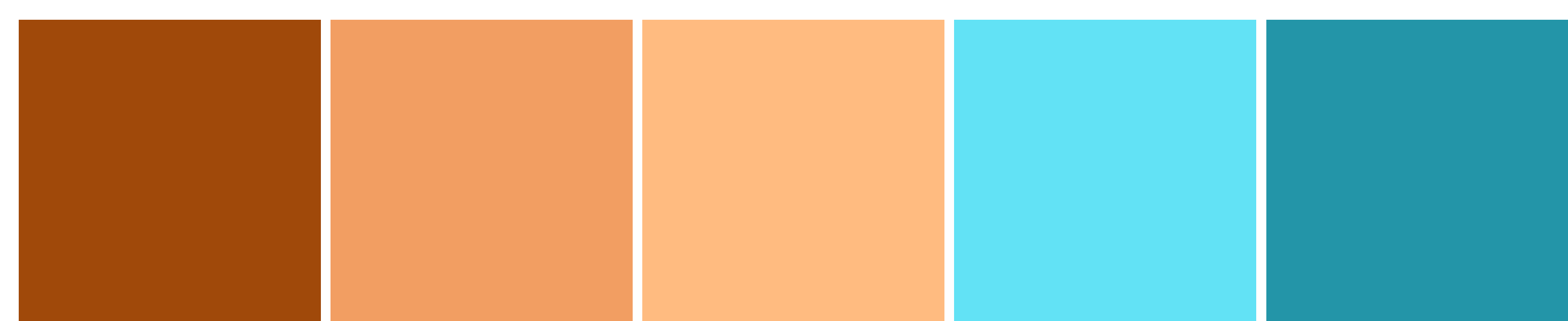
Color Palette:

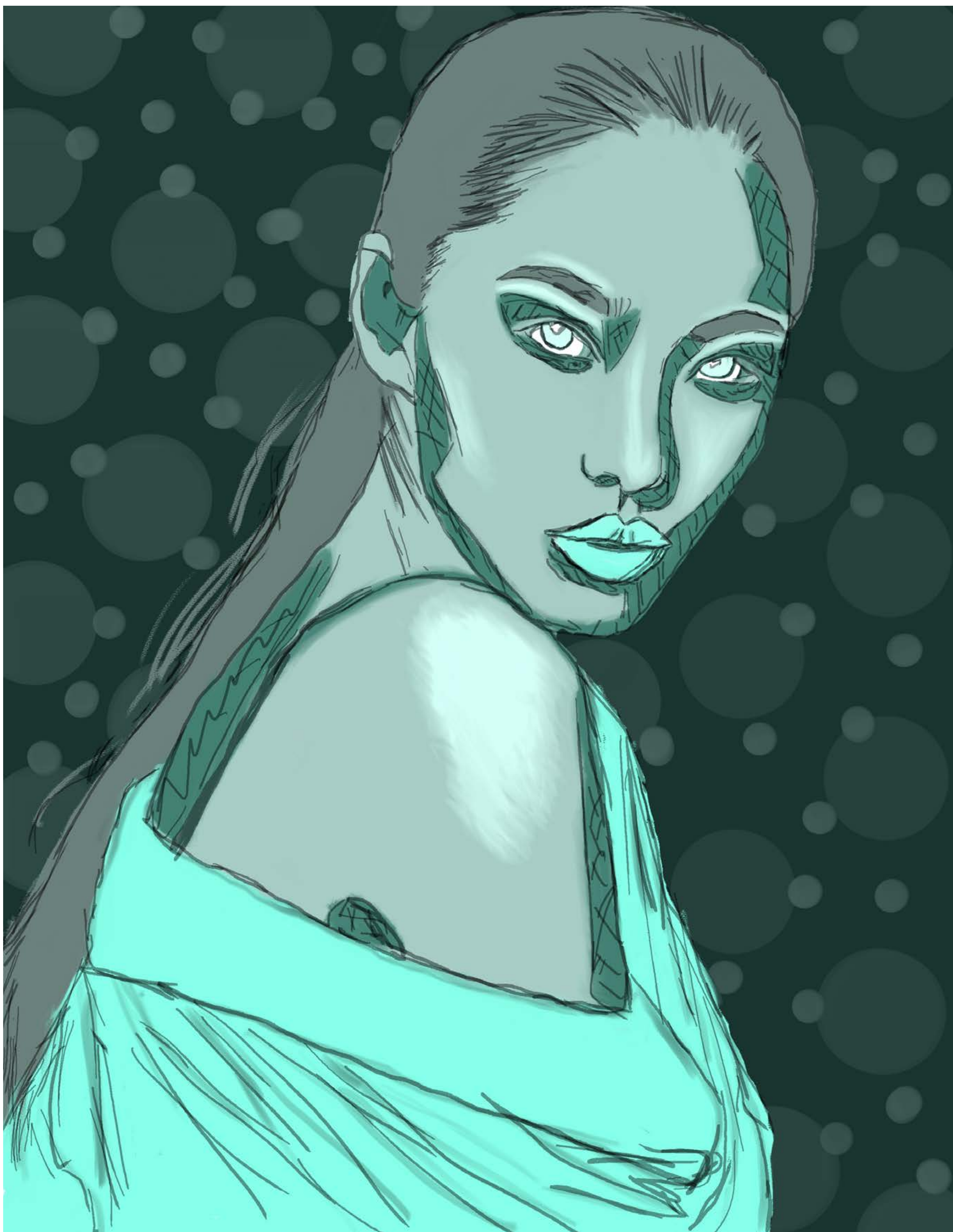


Complementary

From using this type of palette with the plein air painting exercise, I was quite intrigued by the possible color combinations you can get from this palette. Here I've gone for a cooler but vibrant feel, still retaining intensity in the contrast of the shadows and balancing it with the highlights. This color combo was my favorite!

Color Palette:

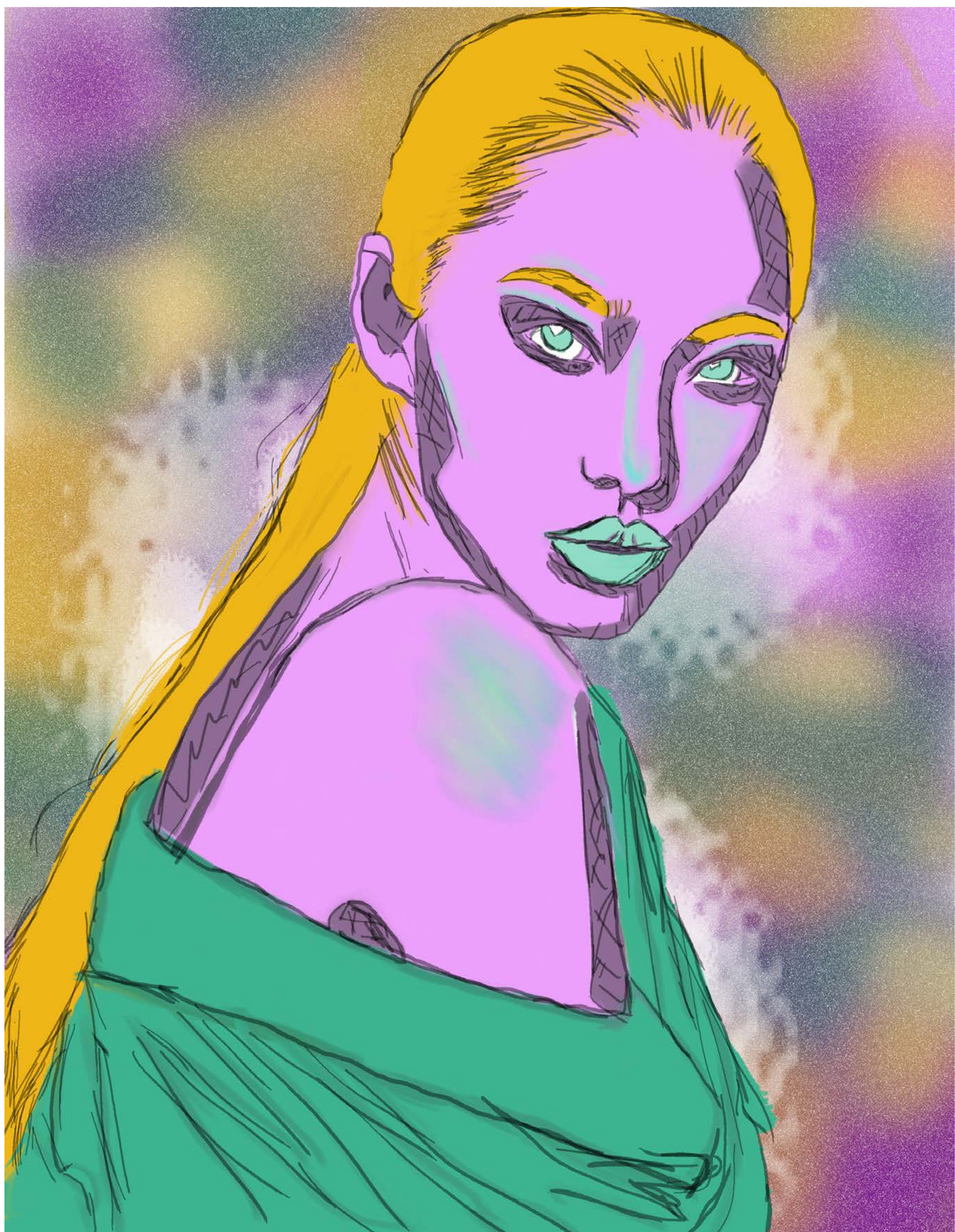




Monochromatic

I was really surprised by the variety that this palette gave me to work with. I wanted to evoke a feeling of iciness or chill. I will definitely be trying this kind of palette again.

Color Palette:



Triad

This was the most difficult one to use, since the colors all contrast so strongly. Since the colors were all so bright I wanted to go for an alien type of look. I also think this looks a bit like graffiti.

Color Palette:

