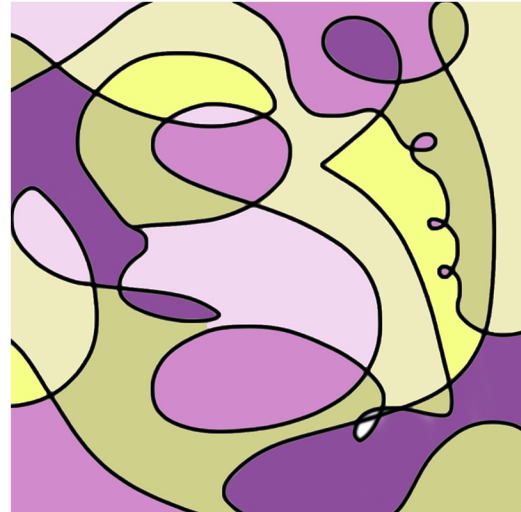


Katie Thomas

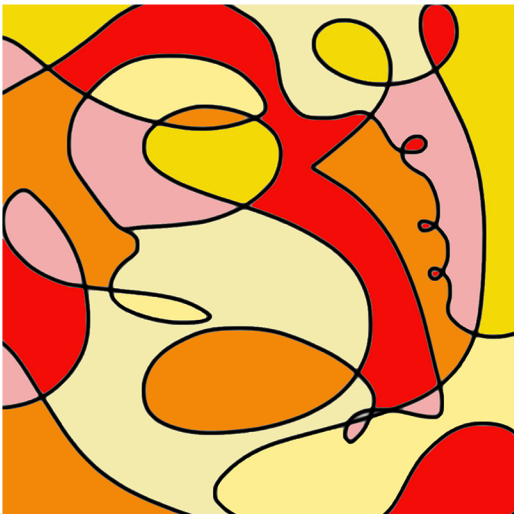
Color Theory Final Portfolio Submission



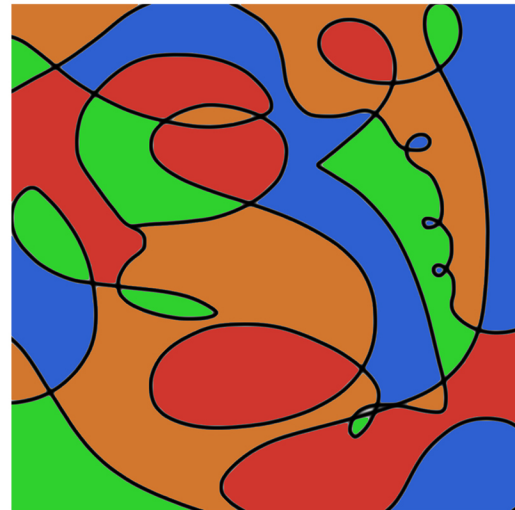
Monochromatic color scheme with blue-violet hue. Using different value and intensity of the color creates depth within the abstract drawing.



Split Complimentary color scheme of pink and yellow-green. Depth created by using different values within each hue.



Analogous color scheme with yellow, orange and red. Different intensity levels create dimension in the drawing.



Tetradic color scheme all with the same value and intensity creates a one dimensional drawing.