

## Monochromatic



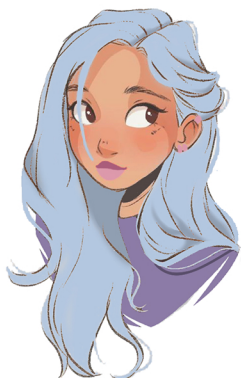
A monochromatic color scheme is one color with only variations in tint, shade, saturation, or texture to add depth and variance.

## Split Complementary



Split complementary schemes are one main color on the wheel and then the two colors that are on either side of its complementary.

## Analogous



An analogous color scheme uses colors that are next to each other on the color wheel to create a relaxing color scheme.